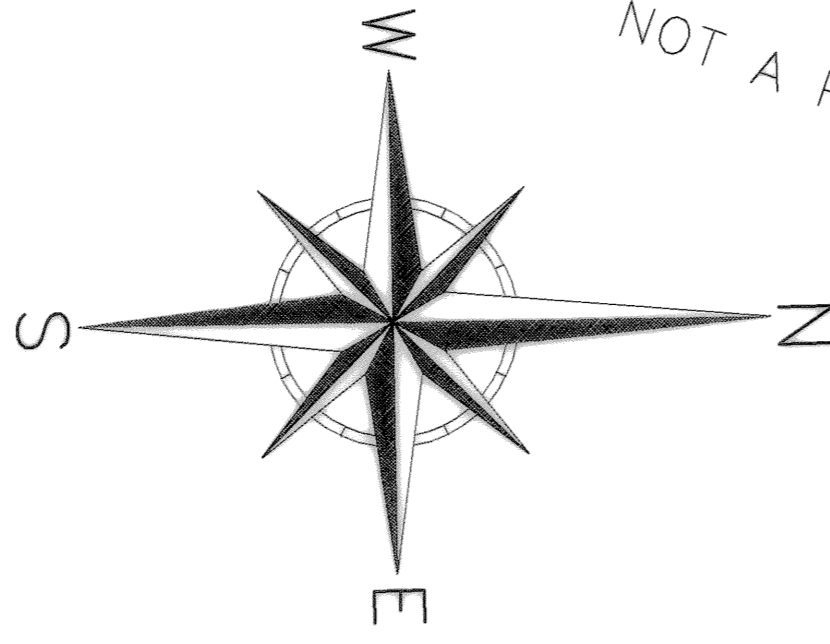
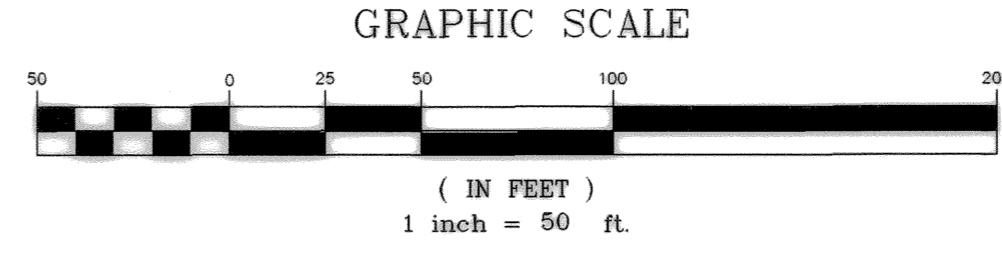
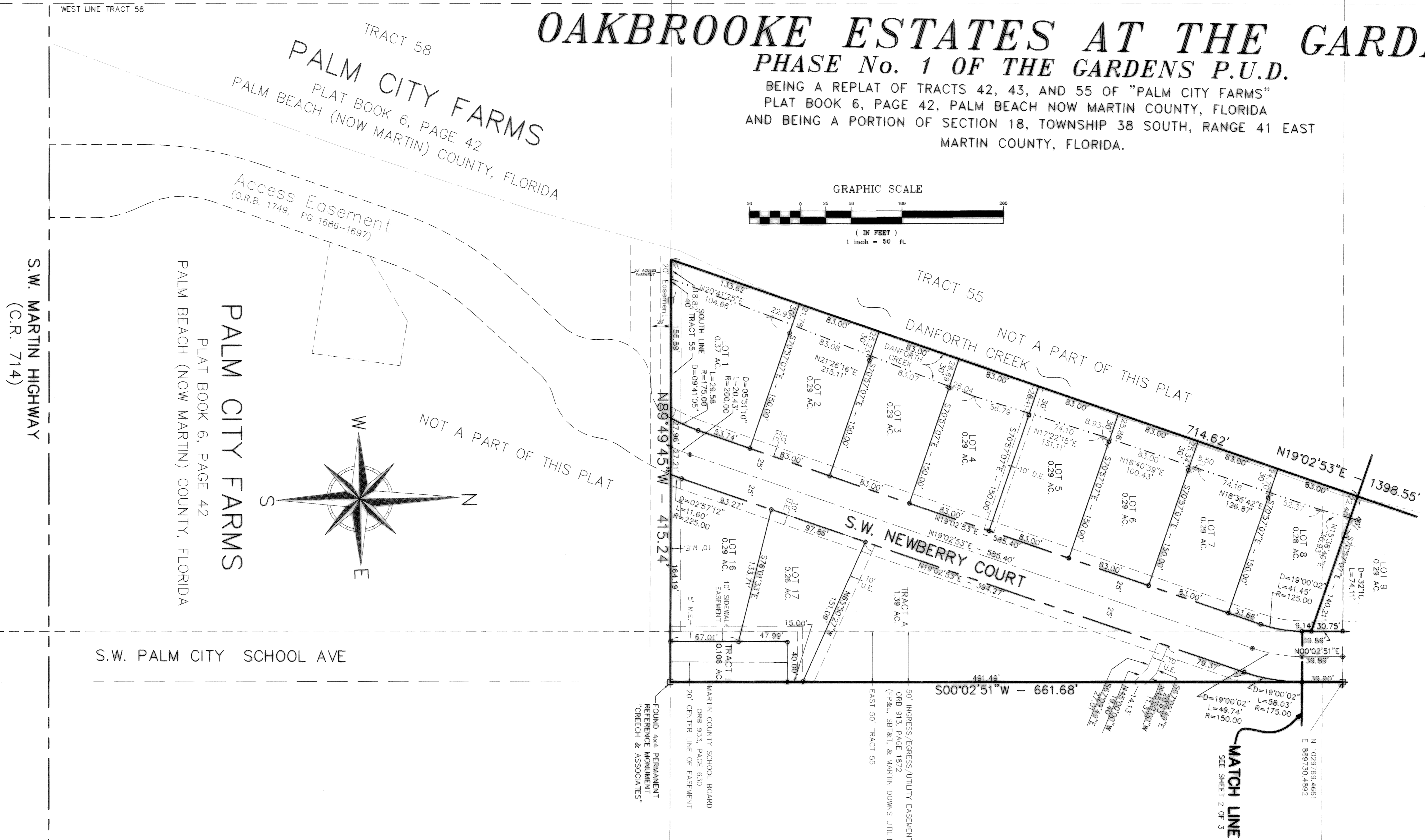


OAKBROOKE ESTATES AT THE GARDENS

PHASE No. 1 OF THE GARDENS P.U.D.

BEING A REPLAT OF TRACTS 42, 43, AND 55 OF "PALM CITY FARMS"
 PLAT BOOK 6, PAGE 42, PALM BEACH NOW MARTIN COUNTY, FLORIDA
 AND BEING A PORTION OF SECTION 18, TOWNSHIP 38 SOUTH, RANGE 41 EAST
 MARTIN COUNTY, FLORIDA.



GENERAL NOTES

- BEARINGS AS SHOWN HEREON ARE BASED ON STATE PLANE COORDINATES, AS DERIVED FROM MARTIN COUNTY G.P.S. POINTS "OWEN" AND "GS34", REFERENCE A BEARING OF S89°50'34"E ALONG THE NORTH RIGHT OF WAY LINE OF S.W. 34TH STREET IN SECTION 18, TOWNSHIP 38 SOUTH, RANGE 41 EAST, MARTIN COUNTY, FLORIDA.
- THIS PLAT, AS RECORDED IN ITS ORIGINAL FORM IN THE PUBLIC RECORDS, IS THE OFFICIAL DEPICTION OF THE SUBDIVIDED LANDS DESCRIBED HEREON AND WILL IN NO CIRCUMSTANCES BE SUPPLEMENTED IN AUTHORITY BY ANY OTHER FORM OF THE PLAT, WHETHER GRAPHIC OR DIGITAL.
- NOTICE: THERE MAY BE ADDITIONAL RESTRICTIONS THAT ARE NOT RECORDED ON THIS PLAT THAT MAY BE FOUND IN THE PUBLIC RECORDS OF THIS COUNTY.
- IN THE EVENT THAT MARTIN COUNTY OR ANY PERSON(S) DISTURBS THE SURFACE OF A PRIVATE STREET DUE TO MAINTENANCE, REPAIR OR REPLACEMENT OF A PUBLIC IMPROVEMENT LOCATED THEREIN, THEN THE COUNTY SHALL BE RESPONSIBLE FOR RESTORING THE STREET SURFACE TO THE EXTENT WHICH WOULD BE REQUIRED IF THE STREET WERE A PUBLIC STREET, IN ACCORDANCE WITH COUNTY SPECIFICATIONS.
- THERE SHALL BE NO BUILDING OR ANY OTHER KIND OF CONSTRUCTION OR TREES OR SHRUBS PLACED ON DRAINAGE EASEMENTS.

LEGEND

- M.E. INDICATES MAINTENANCE EASEMENT
- D.E. INDICATES DRAINAGE EASEMENT
- U.E. INDICATES UTILITY EASEMENT
- D.B. INDICATES DEED BOOK
- REF INDICATES REFERENCE
- D INDICATES CENTRAL ANGLE
- L INDICATES ARC LENGTH
- AC INDICATES ACRES
- ORB INDICATES OFFICIAL RECORD BOOK
- PG INDICATES PAGE
- INDICATES SET NO. 5 IRON ROD AND CAP "BL LB 6852"
- INDICATES NAIL AND DISK (PCP)
- INDICATES SET 4X4 CONCRETE MONUMENT WITH ALUMINUM DISC "BETSY LINDSAY, INC. PRM LB 6852" (PRM)

PLAT BOOK 15 PAGE 73

B BETSY LINDSAY, INC.
 SURVEYING AND MAPPING
 208 NORTH U.S. HWY NO. 1 - UNIT 8 - TECUESTA, FLORIDA 33469
 (561)675-5275 (561)675-4324 FAX
 LICENSED BUSINESS NO. 6852

OAKBROOKE ESTATES AT THE GARDENS, PHASE No.1
 SHEET 3 OF 3